

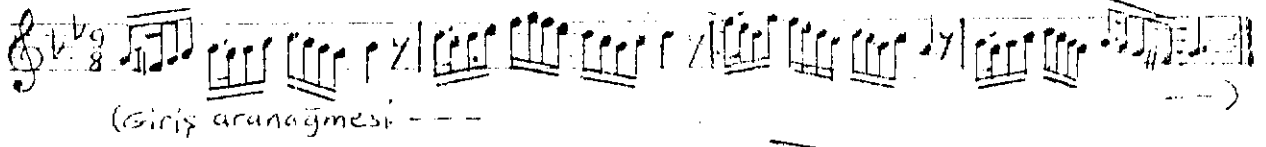
# NİHAVEND ŞARKI

(EY FİTNESİ ÇOK KAVLI YALAN YANDIM ELİNDEN)

AKSAK

$\text{♩} = 144$

SÖZ: ŞAİR AHMET PAŞA  
MÜZİK: SÜMER SAMİ GÜNEY



(Giriş aranağmesi ---)

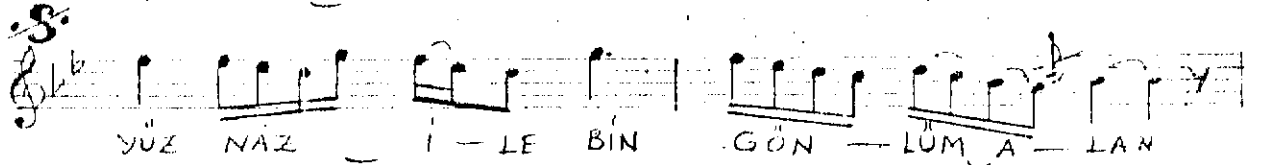


EY FİT-NE-Sİ ÇOK KAV - LI YA - LAN

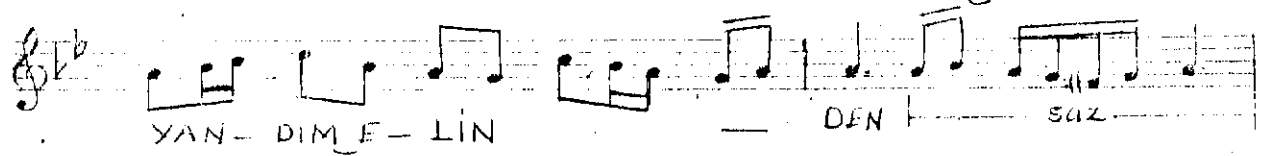


YAN - DIM E - LİN

DEN I - SAZ DEN I - SAZ

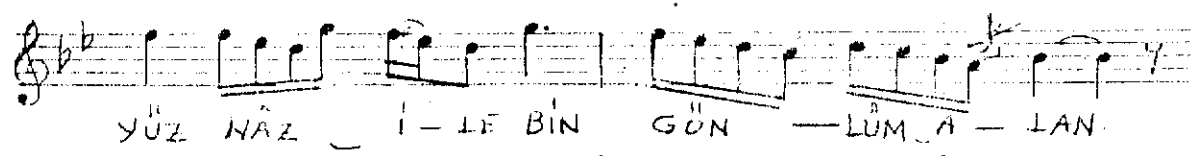


YÜZ NÂZ - I - LE BİN GÜN - LÜM A - LAN



YAN - DIM E - LİN

DEN I - SAZ



YÜZ NÂZ - I - LE BİN GÜN - LÜM A - LAN



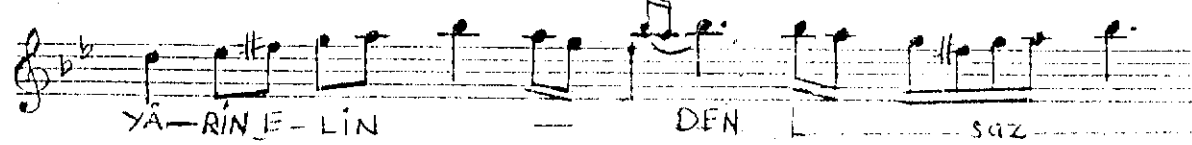
YAN - DIM E - LİN

DEN (son) - SAZ



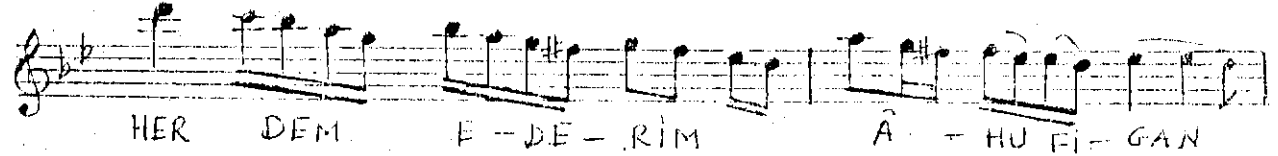
HER DEM E - DE - RİM

Â - HU Fİ - GAN



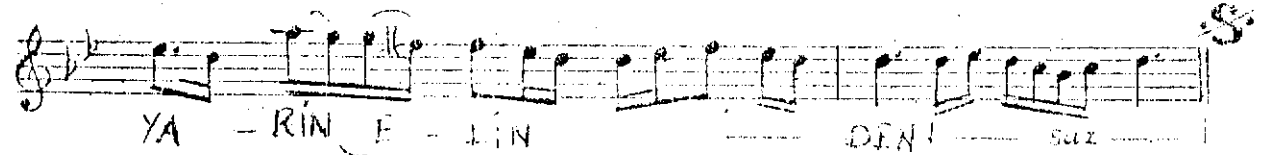
YA - RİN E - LİN

DEN I - SAZ



HER DEM E - DE - RİM

Â - HU Fİ - GAN



YA - RİN E - LİN

DEN I - SAZ

EY FİTNESİ ÇOK KAVLI YALAN YANDIM ELİNDEN  
YÜZ NÂZ İLE BİN GÜN LÜM ALAN YANDI  
HER DEM EDE RİM ÂHU Fİ GAN  
YÜZ NÂZ İLE BİN GÜN LÜM ALAN YANDI